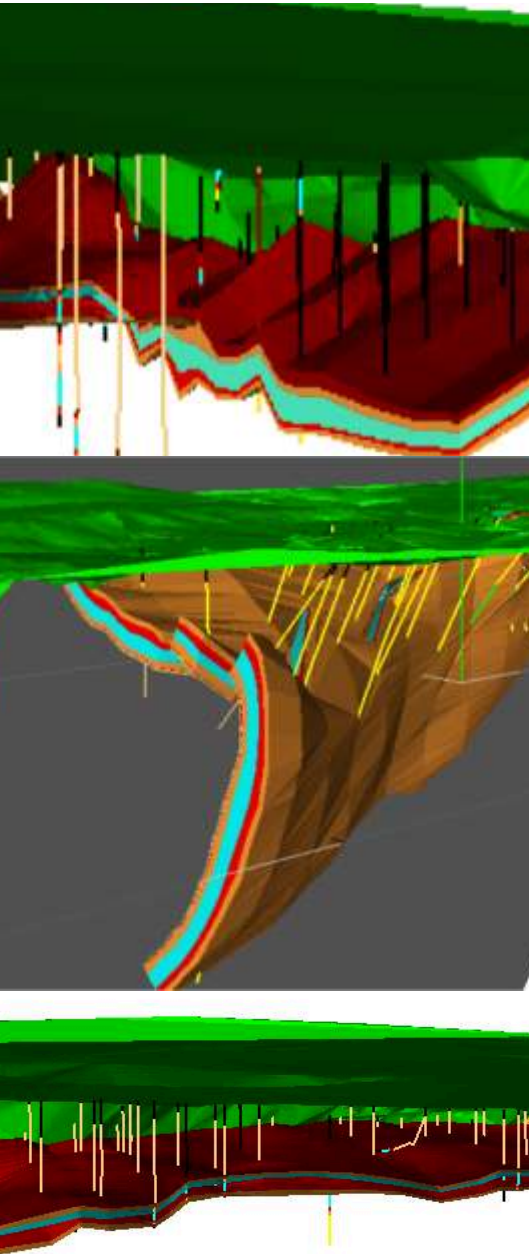


## Resource Modelling



### VISION

KB-MIC's vision is to develop and maintain a position as the distinguished geological consultancy of choice for both our employees and clients. Our focus will be primarily on Green and Brown field exploration in Africa.

We are considered "Competent Persons" by internationally recognized resource reporting standards (SAMREC, Ni43-101, and JORC) for Coal, Gold and Platinum Group Metals. Other commodities related experience includes Uranium, Copper, Iron-ore and Manganese.

### CORE COMPETENCIES

KB-MIC's competitive advantage lies in its ability to offer clients integrated services from target generation through to CPR documentation for public companies.

### Resource Modeling

KB-MIC offers the full spectrum of digital geological modeling services, from database validations and QAQC compliance through to resource classification and tabulations. All of the above are to international public reporting standards. Our software of choice is Datamine Studio™.

### Services Include:

- Electronic database design and configuration
- Implementation of an independent QAQC program
- Database validation and verification
- 3-D geological and structural modeling
- Data analysis and geostatistics
- Geostatistical resource estimation techniques
- Grade variability studies, using conditional simulation techniques
- Resource classification, tabulations and reconciliations
- Independent audits and reviews
- Risk Assessment
- Preparation of technical reports and 'Competent Person's Report' for public companies

Black Owned, Managed and Run

[www.kaibatla.co.za](http://www.kaibatla.co.za)

**Physical Address:** 4 Rutland Avenue, Arena House, Craighall, 2196, Gauteng, South Africa **Postal Address:** P.O. Box 41955, Craighall, 2024  
**Tel:** +27 11 326 0112 **Fax:** +27(0) 86 545 2720 **Email:** [geoconsult@kaibatla.co.za](mailto:geoconsult@kaibatla.co.za)